

ORGANIC RESIN

LA RICERCATEZZA DELLA MATERIA

The substance panache

contains
**ORGANIC
BRICK**



GAMBINI
TILE ON TIME

ORGANIC RESIN

LA RICERCATEZZA DELLA MATERIA

The substance panache



ORGANIC RESIN

COLORI FREDDI

cold colors



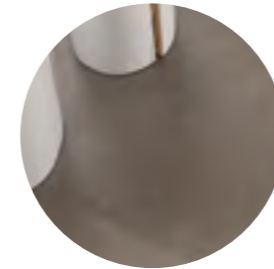
5
ICE



6
SMOKE



8
DARK

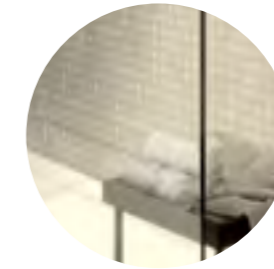


10
TEAK

ORGANIC RESIN

COLORI CALDI

warm colors



12
SAND

ORGANIC BRICK

COLORI FREDDI

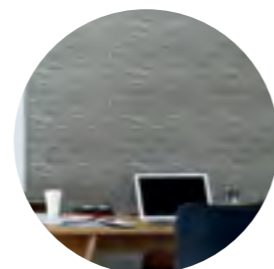
cold colors



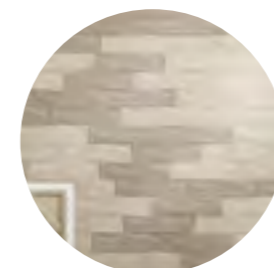
26
I.SHINE



23
ICE



25
SMOKE

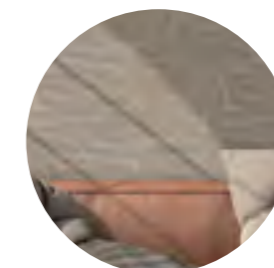


24
SAND

ORGANIC BRICK

COLORI CALDI

warm colors



22
TEAK



**DAL CLASSICO AL CONTEMPORANEO, UNA
SERIE ISPIRATA ALL'ESTETICA DELLA RESINA
PER AMBIENTI PRIVATI E COMMERCIALI.
NONOSTANTE LA SUA RICERCATEZZA
É UNO STILE ADATTO PER GLI AMANTI
DELL'HANDMADE.**

*From classic to contemporary, a series inspired by the beauty of
resin, ideal for residential or commercial settings, combining
sophisticated style with handmade appeal.*



**ORGANIC
RESIN**

**ESTETICA E
RICERCATEZZA**

*Appeal and
preciousness.*




ICE 60X60 RETTIFICATO



REIN ICE 60X60 RETTIFICATO - ORGANIC BRICK TEAK 7,5X30



ICE 30X60 RETTIFICATO



ICE 60X60 RETTIFICATO



SMOKE 60X60 RETTIFICATO



SMOKE 60X60 RETTIFICATO



DARK 60X60 RETTIFICATO



DARK 30X60 RETTIFICATO



TEAK 60X60 RETTIFICATO



TEAK 60X60 RETTIFICATO



SAND 60X60 RETTIFICATO



SAND MOSAICO UP&DOWN 30X30 - 30X60 RETTIFICATO
ORGANIC RUG TEAK 60X60 RETTIFICATO

GRES PORCELLANATO IMPASTO COLORATO / COLORED BODY PORCELAIN STONEWARE / GRES CERAME COLORE DANS LA MASSE / FEINSTEINZEUG, GEFÄRBTE TON

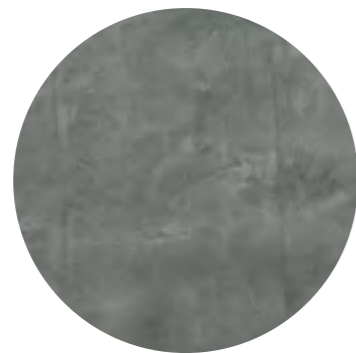
COLORI FREDDI / COLD COLORS



ICE



SMOKE



DARK

FORMATI / SIZES



60X60 RETTIFICATO . 24"x24"



30X60 RETTIFICATO . 12"x24"

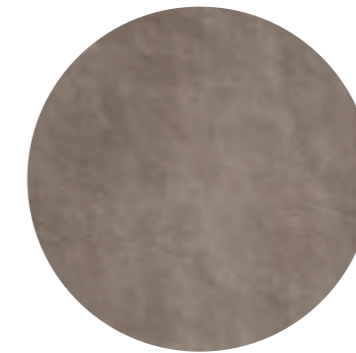
7X60 BATTISCOPA RETTIFICATO . 2⁷/₈"x24"^{mm}

GRES PORCELLANATO IMPASTO COLORATO / COLORED BODY PORCELAIN STONEWARE / GRES CERAME COLORE DANS LA MASSE / FEINSTEINZEUG, GEFÄRBTE TON

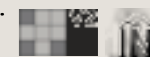
COLORI CALDI / WARM COLORS



SAND



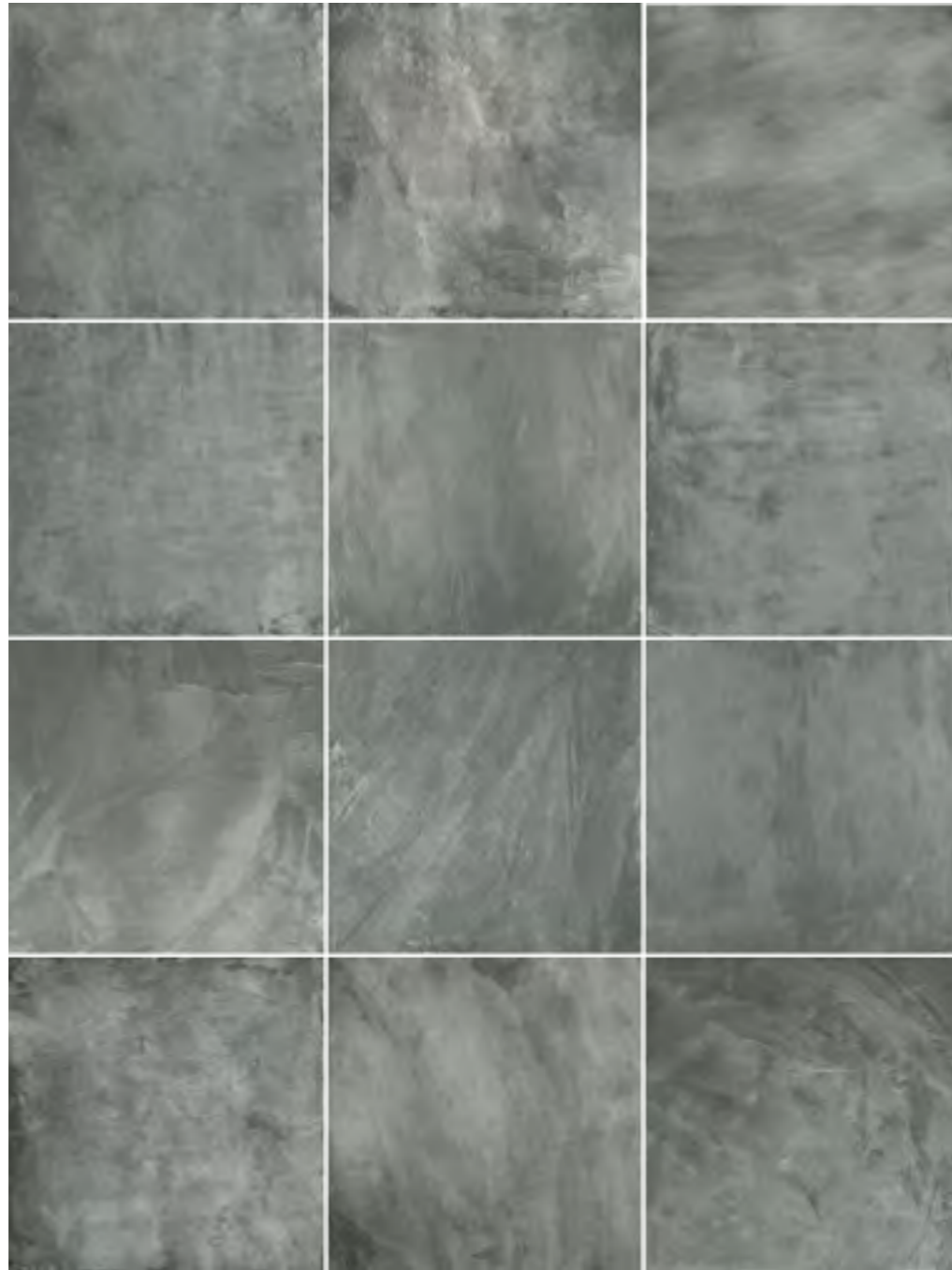
TEAK



ORGANIC RESIN *floor*

GRES PORCELLANATO IMPASTO COLORATO / COLORED BODY PORCELAIN STONEWARE / GRES CERAME COLORE DANS LA MASSE / FEINSTEINZEUG, GEFÄRBTE TON

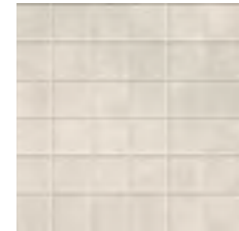
SVILUPPO GRAFICO / GRAPHIC DEVELOPMENT



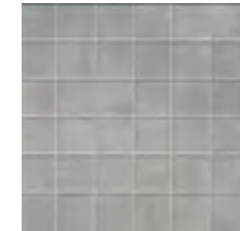
ORGANIC RESIN *floor*

GRES PORCELLANATO IMPASTO COLORATO / COLORED BODY PORCELAIN STONEWARE / GRES CERAME COLORE DANS LA MASSE / FEINSTEINZEUG, GEFÄRBTE TON

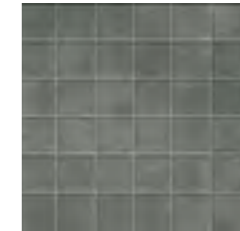
DECORI E PEZZI SPECIALI - COLORI FREDDI / DECORS AND SPECIAL PIECES - COLD COLORS



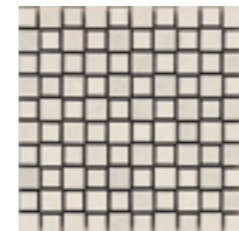
MOSAICO ICE
30X30 . 12"x12"
5X5 . 2"x2"



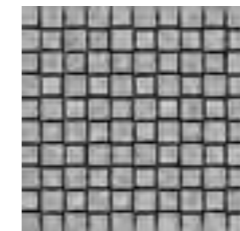
MOSAICO SMOKE
30X30 . 12"x12"
5X5 . 2"x2"



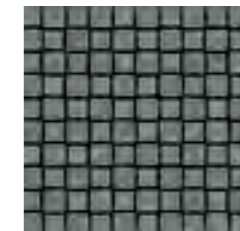
MOSAICO DARK
30X30 . 12"x12"
5X5 . 2"x2"



MOSAICO UP&DOWN ICE
30X30 . 12"x12"



MOSAICO UP&DOWN SMOKE
30X30 . 12"x12"



MOSAICO UP&DOWN DARK
30X30 . 12"x12"

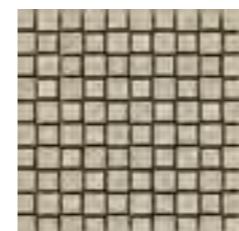
DECORI E PEZZI SPECIALI - COLORI CALDI / DECORS AND SPECIAL PIECES - WARM COLORS



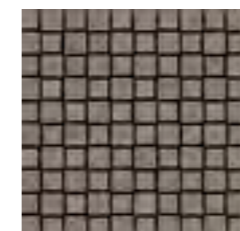
MOSAICO SAND
30X30 . 12"x12"
5X5 . 2"x2"



MOSAICO TEAK
30X30 . 12"x12"
5X5 . 2"x2"



MOSAICO UP&DOWN SAND
30X30 . 12"x12"



MOSAICO UP&DOWN TEAK
30X30 . 12"x12"



CON COLORI COORDINATI ALLE SERIE RESIN E RUG, I MATTONCINI IN FORMATO 7,5X30 DELLA COLLEZIONE ORGANIC RAPPRESENTANO UNA COMBINAZIONE DI TENDENZA, TRA IL GLAMOUR MODERNO E LO STILE METROPOLITANO DI UNA VOLTA.

Coordinated colors with Resin and Rug, the brick size (3"x12") of the Organic range it's a trendy combination of modern fashion and old metropolitan style.



ORGANIC BRICK

**TRA GLAMOUR MODERNO
E SUGGERIMENTI DEL
PASSATO**

*Between modern glamour and
suggestions of the past.*





ORGANIC RESIN SAND 60X60 RETTIFICATO
ORGANIC RESIN BRICK SAND / TEAK 7,5X30



ORGANIC RESIN SMOKE 60X60 RETTIFICATO - ORGANIC BRICK SMOKE 7,5X30

BICOTTURA PASTA BIANCA / DOUBLE FIRING WHITE BODY / BICUISSON PÂTE BLANCHE / ZWEIBRAND WEISSE SCHERBE

COLORI FREDDI / COLD COLORS



I.SHINY



ICE



SMOKE

FORMATI / SIZES



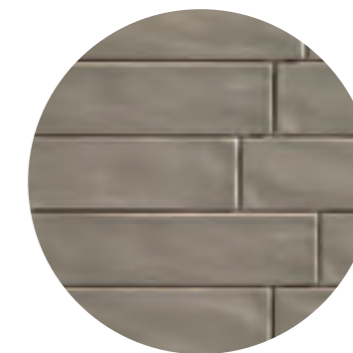
7,5X30 . 3"x12"

BICOTTURA PASTA BIANCA / DOUBLE FIRING WHITE BODY / BICUISSON PÂTE BLANCHE / ZWEIBRAND WEISSE SCHERBE

COLORI CALDI / WARM COLORS



SAND



TEAK






TECHNICAL INDEX

*indice
tecnico*






IMBALLI E PESI / PACKING AND WEIGHT	30
CARATTERISTICHE TECNICHE / TECHNICAL FEATURES	31
CONDIZIONI DI VENDITA / CONDITIONS OF SALE	32





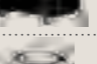
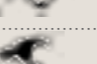




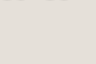



ORGANIC RESIN *floor*

FORMATO / SIZE / FORMAT / FORMAT	 PCS	 MQ	 KG	 BOX	 KG
60X60 . 24"x24" RETTIFICATO	3	1,08	22,81	32	749,98
30X60 . 12"x24" RETTIFICATO	8	1,44	26,96	32	882,97
BATTISCOPA 7X60 . 27/8"x24" RETTIFICATO	20	-	19,00	42	-
30X30 . 12"x12" MOSAICO 5X5 . 2"x2"	11	1,00	17,50	30	545,00
30X30 . 12"x12" ORGANIC RESIN MOSAICO UP&DOWN	11	1,00	17,50	30	545,00

ORGANIC BRICK *Rivestimento Coordinato / Matching Wall*

FORMATO / SIZE / FORMAT / FORMAT	 PCS	 MQ	 KG	 BOX	 KG
7,5X30 . 3"x12"	20	0,45	6,40	144	941,60

	CARATTERISTICHE TECNICHE TECHNICAL SPECIFICATION	NORMA REGULATION	VALORE PRESCRITTO DALLA NORMA EN 14411 ISP 13006 REQUIRED STANDARDS	ORGANIC RESIN
	RESISTENZA AL GELO FROST RESISTANCE	UNI EN ISO 10545-2 ASTM C1026	RESISTENTI RESISTANT	INGELIVO
	RESISTENZA ALL'ABRAZIONE RESISTANCE TO ABRASION	UNI EN ISO 10545-7	PEI	DA PEI 3 A PEI 5 A SECONDA DEI COLORI DEPENDING ON THE COLORS
	RESISTENZA ALLO SCIVOLAMENTO SLIP RESISTANCE	DIN 51130	R	IN R9 - OUT R11
	RESISTENZA ALL'ATTRITO STATICO STATIC COEFFICIENT OF FRICTION	ASTM C 1028	$U \geq 0,6$	DRY 0,74 WET 0,65
	COEFFICIENTE DI ATTRITO DINAMICO DYNAMIC COEFFICIENT OF FRICTION	ANSI A137-1:2012	$\geq 0,42$	M > 0,42
	DUREZZA MOHS HARDNESS IN MOHS DEGREES	UNI EN 101-1992	MOHS	5
	RESISTENZA ALL'URTO IMPACT RESISTANCE	UNI EN ISO 10545-5	VALORE DICHIARATO DECLARED VALUE	0,84
	RESISTENZA ALLA FLESSIONE FLEXION RESISTANCE	UNI EN ISO 10545-4	$S \geq 700 \text{ N } (< 7,5 \text{ mm})$ $S \geq 1300 \text{ N } (> 7,5 \text{ mm})$ $R \geq 35 \text{ N/mm}^2$	S. 2.273 R. 46,2
	ASSORBIMENTO D'ACQUA WATER ABSORPTION	UNI EN ISO 10545-3	$\leq 0,5 \%$	0,07 %
	RESISTENZA ALLE MACCHIE RESISTANT TO STAINING	UNI EN ISO 10545-14	SMALTATI ≥ 3	5
	RESISTENZA CHIMICA CHEMICAL RESISTANCE	UNI EN ISO 10545-13	$\leq \text{GB}$	GA
	RESISTENZA AGLI SBALZI TERMICI RESISTANCE TO THERMAL SHOCKS	UNI EN ISO 10545-9	RESISTENTI RESISTANT	RESISTENTE



30X60



60X60



INDICAZIONI DI POSA / LAYING INSTRUCTION / INSTRUCTIONS DE POSE / VERLEGEANLEITUNG

LA POSA CORRETTA DEI PAVIMENTI: CONSIGLI E INDICAZIONI TECNICHE

NELLA POSA DI MATERIALI CERAMICI DI MONOCOTTURA E GRES PORCELLANATO IN ESTERNI, NON POSSONO ESSERE DISATTESE ALCUNE FONDAMENTALI NORME DI POSA PER RENDERE IMPECCABILI ED INATTACABILI DAL GELO LE STRUTTURE PAVIMENTATE. I PUNTI E I PARAMETRI PIU' IMPORTANTI SONO:

- PENDENZA: È NECESSARIO GARANTIRE AL PAVIMENTO UNA PENDENZA MINIMA DEL 2% (2 CM DI ABBASSAMENTO PER OGNI METRO LINEARE).
- USO DEI GIUNTI DI DILATAZIONE: PER COMPENSARE LA DILATAZIONE AL CALORE OD IL RITIRO DOVUTO AL RAFFREDDAMENTO È CONSIGLIATO, OGNI 3 METRI LINEARI, L'USO DI GIUNTI DI DILATAZIONE CHE ATTRAVERSINO LO STRATO PORTANTE, FINO ALLO STRATO DI IMPERMEABILIZZAZIONE. PER IL RIPIEPIAMENTO DEI GIUNTI, VENGONO UTILIZZATI MATERIALE ESPANSO E MATERIALE ISOLANTE.
- STRATO DI SCORRIMENTO: HA LO SCOPO DI EVITARE TENSIONI E DANNI ALLO STRATO DI IMPERMEABILIZZAZIONE.
- STRATO DI IMPERMEABILIZZAZIONE: HA LO SCOPO DI EVITARE LA RISALITA' DI UMIDITA' O ACQUE METEORICHE LIBERE.
- STRATO ISOLANTE TERMICO: DA REALIZZARE UTILIZZANDO MATERIALI REALMENTE ISOLANTI.
- BLOCCO VAPORE: VIENE POSTO SOTTO ALLO STRATO ISOLANTE UTILIZZANDO FOGLI DI PLASTICA, POSATI SOPRA A CARTONI BITUMATI E FORATI.
- ALLATTO DELLA POSA, CONTROLLARE TONO CALIBRO E SCELTA. IL MATERIALE VIENE DELIBERATEMENTE PRODOTTO E SCELTO CON LEGGERE DIFFERENZE DI TONALITÀ CHE NE SOTTOLINEANO L'EFFETTO CROMATICO, È ASSOLUTAMENTE INDISPENSABILE PRELEVARE PIASTRELLE DA DIVERSE SCATOLE AL MOMENTO DELLA POSA. L'USO DI MATERIALE CHE SIA DIFFORME DALL'ORDINE O DIFETTOSO IMPLICA L'ACCETTAZIONE DELLE CARATTERISTICHE QUALITATIVE ED ESCLUDE CONTESTAZIONI. NON SI ACCETTANO CONTESTAZIONI RELATIVE A MATERIALE GIÀ POSATO.

CORRECT FLOOR LAYING: RECOMMENDATIONS AND TECHNICAL INDICATIONS

THE OUTDOOR LAYING OF SINGLE-FIRED CERAMIC PRODUCTS MUST COMPLY WITH CERTAIN FUNDAMENTAL STANDARDS SO THAT THE FLOORING MAY BE FLAWLESS AND RESISTANT TO FROST. THE MOST IMPORTANT POINTS AND PARAMETERS ARE THE FOLLOWING:

- SLOPE: THE FLOOR MUST HAVE A MINIMUM SLOPE OF 2 % (2 CM OF LOWERING FOR EACH LINEAR METRE).
- USE OF EXPANSION JOINTS: TO COMPENSATE THE EXPANSION DUE TO HEAT OR THE SHRINKING DUE TO FROST, WE RECOMMENDED THAT, EVERY 3 METRES, EXPANSION JOINTS ARE USED THAT PASS OVER THE BEARING LAYER, UP TO THE WATERPROOFING LAYER: EXPANDED MATERIAL AND INSULATING MATERIAL ARE USED FOR FILLING THE JOINTS.
- SEPARATING LAYER: USED FOR PREVENTING TENSION AND DAMAGE TO THE WATERPROOFING LAYER.
- DAMP-PROOF COURSE: USED FOR PREVENTING HUMIDITY AND WATER FROM COMING THROUGH.
- THERMAL INSULATION LAYER: TO BE MADE WITH INSULATING MATERIALS.
- WATER BARRIER: PLACED UNDER THE INSULATING LAYER USING SHEETS OF PLASTIC LAID OVER BITUMIZED PERFORATED CORDBOARD.
- WHEN SETTING THE TILES, PLS CHECK TONE, CALIBER AND CHOICE. OUR MATERIAL IS DELIBERATELY PRODUCED AND CHOSEN WITH SLIGHT DIFFERENCES IN SHADE WHICH UNDERLINE THE COLOUR EFFECTIT IS ABSOLUTELY NECESSARY TO USE TILES FROM DIFFERENT BOXES WHEN INSTALLING. THE USE OF MATERIAL DIFFERENT FROM THE ORDER OR DEFECTIVE MEANS ACCEPTANCE OF THE QUALITY CHARACTERISTICS OF THE GOODS AND EXCLUDES COMPLAINTS. COMPLAINTS ABOUT MATERIAL ALREADY INSTALLED WILL NOT BE ACCEPTED.
- SEPARATING LAYER: USED FOR PREVENTING TENSION AND DAMAGE TO THE WATERPROOFING LAYER.
- DAMP-PROOF COURSE: USED FOR PREVENTING HUMIDITY AND WATER FROM COMING THROUGH.
- THERMAL INSULATION LAYER: TO BE MADE WITH INSULATING MATERIALS.
- WATER BARRIER: PLACED UNDER THE INSULATING LAYER USING SHEETS OF PLASTIC LAID OVER BITUMIZED PERFORATED CORDBOARD.
- WHEN SETTING THE TILES, PLS CHECK TONE, CALIBER AND CHOICE. OUR MATERIAL IS DELIBERATELY PRODUCED AND CHOSEN WITH SLIGHT DIFFERENCES IN SHADE WHICH UNDERLINE THE COLOUR EFFECTIT IS ABSOLUTELY NECESSARY TO USE TILES FROM DIFFERENT BOXES WHEN INSTALLING. THE USE OF MATERIAL DIFFERENT FROM THE ORDER OR DEFECTIVE MEANS ACCEPTANCE OF THE QUALITY CHARACTERISTICS OF THE GOODS AND EXCLUDES COMPLAINTS. COMPLAINTS ABOUT MATERIAL ALREADY INSTALLED WILL NOT BE ACCEPTED.

LA POSE CORRECTE DES SOLS: CONSEILS ET INDICATIONS TECHNIQUES

LORS DE LA POSE À L'EXTÉRIEUR DE MATÉRIAUX CÉRAMIQUES EN MONOCOISSON, ILS EST IMPÉRATIF DE RESPECTER CERTAINES RÈGLES FONDAMENTALES QUI ASSURENT LA RÉALISATION DE CARRELAGES IMPECCABLES, INSENSIBLES AUX ATTAQUES DU GEL. LES POINTS ESSENTIELS ET LES PRINCIPAUX PARAMÈTRES SONT LES SUIVANTS:

- INCLINATION: IL FAUT ASSURER AU SOL UNE INCLINAISON DE 2% AU MOINS (2 CM D'ABAISSEMENT PAR MÈTRE LINÉAIRE).
- EMPLOI DE JOINTS DE DILATATION: POUR COMPENSER LA DILATATION DUE À LA CHALEUR OU LE RETRAIT DU AU REFROIDISSEMENT, NOUS CONSEILLONS D'UTILISER TOUS LES 3 MÈTRES LINÉAIRES DES JOINTS DE DILATATION QUI TRAVERSENT LA COUCHE PORTANTE ET ARRIVENT À LA COUCHE D'IMPERMÉABILISATION. POUR REMPLIR LES JOINTS ON UTILISE DES MATIÈRES EXPANSÉES ET DES MATIÈRES ISOLANTES.
- COUCHE D'ÉCOULEMENT: SON BUT EST D'ÉVITER À LA COUCHE D'IMPERMÉABILISATION DE SE TENDRE ET DE S'ABÏMER.
- COUCHE D'IMPERMÉABILISATION: SON BUT EST D'ÉVITER LA REMONTÉE D'HUMIDITÉ OU D'EAUX MÉTÉORIQUES LIBRES.
- COUCHE D'ISOLANT THERMIQUE: À RÉALISER EN UTILISANT DE VÉRITABLES ISOLANTS.
- BLOC VAPEUR: IL EST PLACÉ SOUS LA COUCHE ISOLANTE. ON UTILISE DES FEUILLES DE PLASTIQUE POSÉES SUR DES CARTONS GOUDRONNÉS ET PERCHÉS.
- CI DESSOUS LES PRECAUTIONS QU IL FAUT ABSOLUMENT SUIVRE LORS DE LA POSE DU MATÉRIEL CONTROLER LA TONALITÉ, LE CALIBRE ET LE CHOIX. IL FAUT SAVOIR QUE CE MATÉRIEL ET INTENTIONNELLEMENT PRODUIT ET SELECTIONNE AVEC DE LEGERES NUANCES AU NIVEAU DU TON. CECI PERMET DE METTRE EN EVIDENCE L'ENSAMBLE DE L'EFFET DE COULEUR DU PRODUIT. IL EST DONC PREFERABLE DE PRELEVER LES CARREAUX EN ALTERNANT LES BOITES AFIN D'OBTENIR UN PAVE UNIFORME. EN OUTRE SI LORS DE LA COMMANDE AU CLIENT ACCPETE D'UTILISER DE LA MARCHANDISE VISIBILMENT DEFECTUEUSE OU NON CONFORME, AUCUNE RECLAMATIONNE SERA RETENU. CAR CELUI-CI ETAIT INFORME DES CARACTERISTIQUES. DE PLUS AUCUNE CONTESTATION RELATIVE AU MATÉRIEL N'EST ACCPETE CI CELUI-CI EST DEJA POSE.

DAS KORREKTE VERLEGEN DER BODENBELÄGE: RATSCHLÄGE UND TECHNISCHE HINWEISE

BEIM AUSSENVERLEGUNG VON EINBRANDFLIESEN MÜSSEN GEWISSE VERLEGUNGSGRUNDSÄTZE BEACHTET WERDEN, UM EINE TADELLOSE UND FROSTBESTÄNDIGE BELEGUNG ZU VERSICHERN. DAS SIND DIE WICHTIGSTEN PARAMETER:

- GEFÄLLE: EIN MINDESTGEFÄLLE VON 2% NUSS GEWÄHRLEISTET WERDEN (2 CM ABSENKUNG PRO LAUFENDEM METER).
- BENUTZUNG VON DEHNUNGSFUGEN: ZUM AUSGLEICH VON TEMPERATURBEDINGTEN AUSDEHNUNGEN ODER SCHWINDUNG WIRD ALLE 3 METER DIE EINBRINGUNG VON DEHNUNGSFUGEN EMPFOHLEN, DIE TRAGSCHICHT BIS ZUR DICHTUNGSSCHICHT KREUZEN. ZUR FÜLLUNG DER FUGEN WERDEN ELASTISCHE UND ISOLIERENDE MATERIALIEN VERWENDET.
- GLEITSSCHICHT: SIE HAT DEN ZWECK, SPANNUNG UND BESCHÄDIGUNGEN DER DICHTUNGSSCHICHT ZU VERMEIDEN.
- DICHTUNGSSCHICHT: SIE HAT DIE AUFGABE, DAS AUFSTEIGEN VON FEUCHTIGKEIT ODER WASSER ZU VERHIDERN.
- WÄRMEISOLIERSSCHICHT: UNTER VERWENDUNG TATSÄCHLICH ISOLIERENDER MATERIAL ZU REALISIEREN.
- DAMPSPERRSCHICHT: WIRD ERZIELT, IM UNTER DER ISOLIERSSCHICHT PLASTIKFLIEN ÜBER GELOCHTER TEERPAPPE VERLEGT WERDEN.
- BEI DER VERLEGUNG ES SEHR WICHTIG DIE TONALITÄET, DAS KALIBRER UN DIE SORTIERUNG ZU KONTROLLIEREN. DA DAS MATERIAL AUSDRUECKLICH MIT KLEINEN FARBTONENDIFFERENZEN SORTIERT UN DEN CHROMSTIESCHEN EFFEKT ZU HERVORHEBEN WIRD. MANN MUSS UNBEDINGT DIE FLIESEN VON VERSCHIEDENEN KARTONS NEHMEN BEI DER VERLEGUNG. WENN MANN MATERIAL NICKAKZEPTIERT HT AEHNLICH MIT DER BESTELLUNG ODER MIT HERSTELUNGSFEHLERN BENUETZT BEDEUTET DER KUNDE DIE TECHNISCHEN DATEN DER WARE UND SCHLIESST DIE REKLAMATIONEN AUS. DIE FIRMA ZIEHT NICHT IN ERWAEUNG REKLAMATIONEN BETREFFEND FLIESEN DIE SCHON VERLEGT WORDEN SIND.

LE INFORMAZIONI CONTENUTE NEL PRESENTE CATALOGO SONO IL PIÙ POSSIBILE ESATTE, MA NON SONO DA RITENERSI LEGALMENTE VINCOLANTI. PER ESIGENZE DI PRODUZIONE CI RISERVIAMO IL DIRITTO DI APPORTARE EVENTUALI MODIFICHE CHE SI RENDONO NECESSARIE. COLORI E MISURE POTREBBERO ESSERE SOGGETTI A VARIAZIONI. I COLORI IN CATALOGO SI AVVICINANO QUANTO PIU' POSSIBILE A QUELLI REALI NEI LIMITI CONSENTITI DAI PROCESSI DI STAMPA. QUESTO CATALOGO ANNULLA E SOSTITUISCE OGNI PRECEDENTE VERSIONE. GENNAIO 2016

THE INFORMATION CONTAINED IN THIS CATALOGUE IS CORRECT TO THE BEST OF OUR KNOWLEDGE, BUT IS NOT TO BE CONSTRUED AS LEGALLY BINDING. WE RESERVE THE RIGHT TO MAKE CHANGE AS AND WHEN PRODUCTION REQUIRE THEM NECESSARY. COLOURS AND SIZES ARE SUBJECT TO THE USUAL VARIATION EXPECTED IN CERAMIC PRODUCTS. COLOURS SHOWN ARE AS CLOSE TO THE REAL AS THE LIMITATION OF THE PRINTING PROCESS WILL ALLOW. THIS CATALOGUE REPLACES THE PREVIOUS ONES. JANUARY 2016

LES INFORMATIONS CONTENUES DANS LE PRÉSENT CATALOGUE SONT LE PLUS JUSTE POSSIBLE, MAIS NE SONT PAS À PRENDRE EN CONSIDÉRATION LÉGALEMENT. POUR DES CONTRAINTES LIÉES À LA PRODUCTION, NOUS NOUS RÉSERVONS LE DROIT D'APPORTER D'ÉVENTUELS CHANGEMENTS QUI PEUVENT S'AVÉRER NÉCESSAIRES : COULEURS, DIMENSIONS PEUVENT VARIÉES SUITE À DES MODIFICATIONS. LES COULEURS SONT LE PLUS PROCHE POSSIBLE DE LA RÉALITÉ DANS LA LIMITE DES PROCÉDÉS D'IMPRESSION. CE CATALOGUE ANNULE ET REMPLACE LA VERSION ANTÉCÉDENTE À JANVIER 2016.

INFORMATIONEN ENTHALTEN IN DIESEM KATALOG SIND SO VIEL WIE MÖGLICH EXAKT, ABER SIE SIND NICHT GESETZLICH VERBINDLICH. WEGEN PRODUKTIONSBEDÜRFNISSE KÖNNEN WIR EINIGE ERFORDERLICHE ABÄNDERUNGEN VORNEHMEN. FARBEN UND MAE KÖNNEN ABÄNDERUNGEN ERLEIDEN. DIE FARBEN IN DEM KATALOG SIND SO VIEL WIE MÖGLICH REALISTISCH, ABER MIT STEMPELBESCHRÄNKUNGEN DER KATALOG ANNULIERT UND TAUSCHT DIE VORIGE DARSTELLUNG AUS.

GAMBINI GROUP SI RISERVA IL DIRITTO DI APPORTARE IN QUALSIASI MOMENTO MODIFICHE O VARIAZIONI AI PRODOTTI PRESENTI IN QUESTO CATALOGO.

GAMBINI GROUP RESERVES THE RIGHT TO CHANGE THE PRODUCTS PRESENTED IN THIS CATALOGUE AT ANY TIME.

GAMBINI GROUP SE RÉSERVE À TOUT MOMENT LA FACULTÉ D'APPORTER DES MODIFICATIONS OU DES VARIATIONS SUR LES PRODUITS PRÉSENTÉS SUR CE CATALOGUE.

DIE FIRMA GAMBINI GROUP BEHÄLT SICH DAS RECHT VOR, JEDERZEIT ÄNDERUNGEN AN DEN IN KATALOG AUFGEFUHRTEN PRODUKTEN VORZUNEHMEN.

NON SI ACCETTANO RECLAMI PER I MATERIALI POSTI IN OPERA.

NO COMPLAINTS WILL BE ACCEPTED FOR MATERIAL AFTER LAYING.

AUCUNE RECLAMATION CONCERNANT MATARIEL POSE NE SERA PRISE EN CONSIDERATION.

ES WIRD KEINE REKLAMATION FUER SCHON VERLAGTES MATERIAL ANGONOMMEN.

COORDINAMENTO:
UFFICIO MARKETING GAMBINI GROUP



CONCEPT CREATIVO:
KALIMERA

FINITO DI STAMPARE:
GIUGNO 2016

GAMBINI TILE ON TIME - BRAND OF:
GAMBINI GROUP SRL

VIA RADICI IN PIANO, 675 - 41049 SASSUOLO (MO) . ITALY
PH. +39 0536 995711 . FAX +39 0536 905042-807182
WWW.GAMBINITILE.COM





GAMBINI
TILE ON TIME

WWW.GAMBINITILE.COM